



Original Investigation | Global Health

# Household Transmission of SARS-CoV-2 A Systematic Review and Meta-analysis

Zachary J. Madewell, PhD; Yang Yang, PhD; Ira M. Longini Jr, PhD; M. Elizabeth Halloran, MD, DSc; Natalie E. Dean, PhD

## Abstract

**IMPORTANCE** Crowded indoor environments, such as households, are high-risk settings for the transmission of severe acute respiratory syndrome coronavirus 2 (SARS-CoV-2).

**OBJECTIVES** To examine evidence for household transmission of SARS-CoV-2, disaggregated by several covariates, and to compare it with other coronaviruses.

**DATA SOURCE** PubMed, searched through October 19, 2020. Search terms included SARS-CoV-2 or COVID-19 with secondary attack rate, household, close contacts, contact transmission, contact attack rate, or family transmission.

**STUDY SELECTION** All articles with original data for estimating household secondary attack rate were included. Case reports focusing on individual households and studies of close contacts that did not report secondary attack rates for household members were excluded.

**DATA EXTRACTION AND SYNTHESIS** Meta-analyses were done using a restricted maximum-likelihood estimator model to yield a point estimate and 95% CI for secondary attack rate for each subgroup analyzed, with a random effect for each study. To make comparisons across exposure types, study was treated as a random effect, and exposure type was a fixed moderator. The Preferred Reporting Items for Systematic Reviews and Meta-analyses (PRISMA) reporting guideline was followed.

**MAIN OUTCOMES AND MEASURES** Secondary attack rate for SARS-CoV-2, disaggregated by covariates (ie, household or family contact, index case symptom status, adult or child contacts, contact sex, relationship to index case, adult or child index cases, index case sex, number of contacts in household) and for other coronaviruses.

**RESULTS** A total of 54 relevant studies with 77 758 participants reporting household secondary transmission were identified. Estimated household secondary attack rate was 16.6% (95% CI, 14.0%-19.3%), higher than secondary attack rates for SARS-CoV (7.5%; 95% CI, 4.8%-10.7%) and MERS-CoV (4.7%; 95% CI, 0.9%-10.7%). Household secondary attack rates were increased from symptomatic index cases (18.0%; 95% CI, 14.2%-22.1%) than from asymptomatic index cases (0.7%; 95% CI, 0%-4.9%), to adult contacts (28.3%; 95% CI, 20.2%-37.1%) than to child contacts (16.8%; 95% CI, 12.3%-21.7%), to spouses (37.8%; 95% CI, 25.8%-50.5%) than to other family contacts (17.8%; 95% CI, 11.7%-24.8%), and in households with 1 contact (41.5%; 95% CI, 31.7%-51.7%) than in households with 3 or more contacts (22.8%; 95% CI, 13.6%-33.5%).

(continued)

## Key Points

**Question** What is the household secondary attack rate for severe acute respiratory syndrome coronavirus 2 (SARS-CoV-2)?

**Findings** In this meta-analysis of 54 studies with 77 758 participants, the estimated overall household secondary attack rate was 16.6%, higher than observed secondary attack rates for SARS-CoV and Middle East respiratory syndrome coronavirus. Controlling for differences across studies, secondary attack rates were higher in households from symptomatic index cases than asymptomatic index cases, to adult contacts than to child contacts, to spouses than to other family contacts, and in households with 1 contact than households with 3 or more contacts.

**Meaning** These findings suggest that households are and will continue to be important venues for transmission, even in areas where community transmission is reduced.

## + Supplemental content

Author affiliations and article information are listed at the end of this article.

**Open Access.** This is an open access article distributed under the terms of the CC-BY License.

Abstract (continued)

**CONCLUSIONS AND RELEVANCE** The findings of this study suggest that given that individuals with suspected or confirmed infections are being referred to isolate at home, households will continue to be a significant venue for transmission of SARS-CoV-2.

JAMA Network Open. 2020;3(12):e2031756. doi:10.1001/jamanetworkopen.2020.31756

## Introduction

The coronavirus disease 2019 (COVID-19) pandemic is caused by severe acute respiratory syndrome coronavirus 2 (SARS-CoV-2), which is spread via direct or indirect contact with infected people via infected respiratory droplets or saliva, fomites, or aerosols.<sup>1,2</sup> Crowded indoor environments with sustained close contact and conversations, such as households, are a particularly high-risk setting.<sup>3</sup>

The World Health Organization China Joint Mission reported human-to-human transmission in China largely occurred within families, accounting for 78% to 85% of clusters in Guangdong and Sichuan provinces.<sup>4</sup> Stay-at-home orders reduced human mobility by 35% to 63% in the United States,<sup>5</sup> 63% in the United Kingdom,<sup>6</sup> and 54% in Wuhan,<sup>7</sup> relative to normal conditions, which concomitantly increased time at home. Modeling studies demonstrated that household transmission had a greater relative contribution to the basic reproductive number after social distancing (30%-55%) than before social distancing (5%-35%).<sup>8</sup> While current US Centers for Disease Control and Prevention recommendations are to maintain 6 feet of distance from a sick household member, this may be difficult to achieve in practice and not be fully effective.<sup>9</sup>

The household secondary attack rate characterizes virus transmissibility. Studies can collect detailed data on type, timing, and duration of contacts and identify risk factors associated with infectiousness of index cases and susceptibility of contacts. Our objective was to estimate the secondary attack rate of SARS-CoV-2 in households and determine factors that modify this parameter. We also estimated the proportion of households with index cases that had any secondary transmission. Furthermore, we compared the SARS-CoV-2 household secondary attack rate with that of other severe viruses and with that to close contacts for studies that reported the secondary attack rate for both close and household contacts.

## Methods

### Definitions

We estimated the transmissibility of SARS-CoV-2 within the household or family by the empirical secondary attack rate by dividing the number of new infections among contacts by the total number of contacts. Household contacts include anyone living in the same residence as the index case. Family contacts include the family members of index cases, including individuals who live outside the index case's household. Close contact definitions varied by study and included physical proximity to an index case, exceeding a minimum contact time, and/or not wearing effective protection around index cases before the index case was tested.

### Search Strategy

Following Preferred Reporting Items for Systematic Reviews and Meta-analyses (PRISMA) reporting guideline, we searched PubMed using terms including SARS-CoV-2 or COVID-19 with *secondary attack rate*, *household*, *close contacts*, *contact transmission*, *contact attack rate*, or *family transmission* (eTable 1 in the Supplement) with no restrictions on language, study design, time, or place of publication. The last search was conducted October 19, 2020.

## Eligibility Criteria

Eligibility criteria are described in eAppendix 1 in the [Supplement](#). All articles with original data for estimating household secondary attack rate were included. Case reports focusing on individual households and studies of close contacts that did not report secondary attack rates for household members were excluded.

## Data Extraction

One of us (Z.J.M.) extracted data from each study. Details appear in eAppendix 2 in the [Supplement](#).

## Evaluation of Study Quality and Risk of Bias

To assess the methodological quality and risk of bias of included studies of SARS-CoV-2, we used the same modified version of the Newcastle-Ottawa quality assessment scale for observational studies used by Fung et al.<sup>10,11</sup> Studies received as many as 9 points based on participant selection (4 points), study comparability (1 point), and outcome of interest (4 points). Studies were classified as having high ( $\leq 3$  points), moderate (4-6 points), and low ( $\geq 7$  points) risk of bias. One of us (Z.J.M.) evaluated the study quality and assigned the quality grades.

## Statistical Analysis

Meta-analyses were done using a restricted maximum-likelihood estimator model to yield Freeman-Tukey double arcsine-transformed point estimates and 95% CI for secondary attack rate for each subgroup analyzed, with a random effect for each study.<sup>12</sup> For comparisons across covariates (ie, household or family, index case symptom status, adult or child contacts, contact sex, relationship to index case, adult or child index cases, index case sex, number of household contacts, study location, universal or symptomatic testing, dates of study) and comparisons with close contacts and other viruses, study was treated as a random effect, and the covariate was a fixed moderator. Variables had to have been collected in at least 3 studies to be included in meta-analyses. The Cochran Q test and  $I^2$  statistic are reported as measures of heterogeneity.  $I^2$  values of 25%, 50%, and 75% indicated low, moderate, and high heterogeneity, respectively.<sup>13</sup> Statistical significance was set at a 2-tailed  $\alpha = .05$ . All analyses were done in R version 4.0.2 using the package metafor (R Project for Statistical Computing).<sup>14,15</sup>

When at least 10 studies were available, we used funnel plots, Begg correlation, and Egger test to evaluate publication bias, with significance set at  $P < .10$ .<sup>16,17</sup> If we detected publication bias, we used the Duval and Tweedie trim-and-fill approach for adjustment.<sup>18</sup>

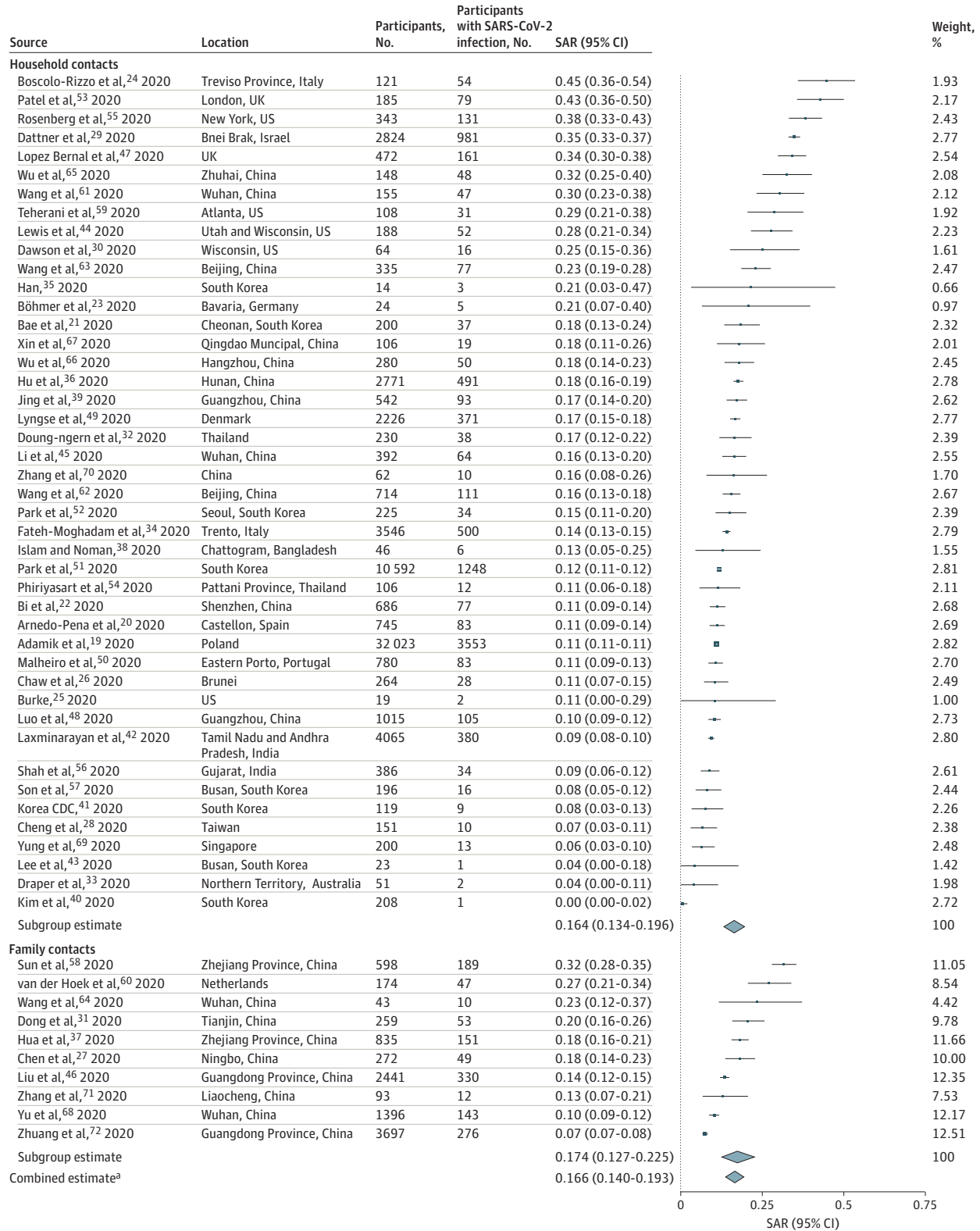
## Results

We identified 54 relevant published studies that reported household secondary transmission, with 77 758 participants (eTable 1 in the [Supplement](#)).<sup>19-72</sup> A total of 16 of 54 studies (29.6%) were at high risk of bias, 27 (50.0%) were moderate, and 11 (20.4%) were low (eTable 2 in the [Supplement](#)). Lower quality was attributed to studies with 1 or fewer test per contact (35 studies [64.8%]), small sample sizes (31 [57.4%]), and secondary attack rate not disaggregated by covariates (28 [51.9%]).

A description of index case identification period and methods and symptom status is provided in eTable 3 in the [Supplement](#). Most studies did not describe how co-primary index cases were handled or whether secondary infections could have been acquired from outside the household, both of which can inflate the empirical secondary attack rate. Testing and monitoring strategies varied between studies, often reflecting variations in local testing guidelines implemented as part of contact tracing (eTable 4 and eAppendix 3 in the [Supplement](#)).

**Figure 1** summarizes secondary attack rates for 44 studies<sup>19-26,28-30,32-36,38-45,47-57,59,61-63,65-67,69,70</sup> of household contacts and 10 of family contacts.<sup>26,31,37,45,58,60,65,68,71,72</sup> Estimated mean secondary attack rate for household contacts was 16.4% (95% CI, 13.4%-19.6%) and family contacts was 17.4% (95% CI, 12.7%-22.5%). One study<sup>40</sup>

Figure 1. Secondary Attack Rates (SAR) of Severe Acute Respiratory Syndrome Coronavirus 2 (SARS-CoV-2) for Household Contacts and Family Contacts



Point sizes are an inverse function of the precision of the estimates, and bars correspond to 95% CIs. CDC indicates Centers for Disease Control and Prevention.

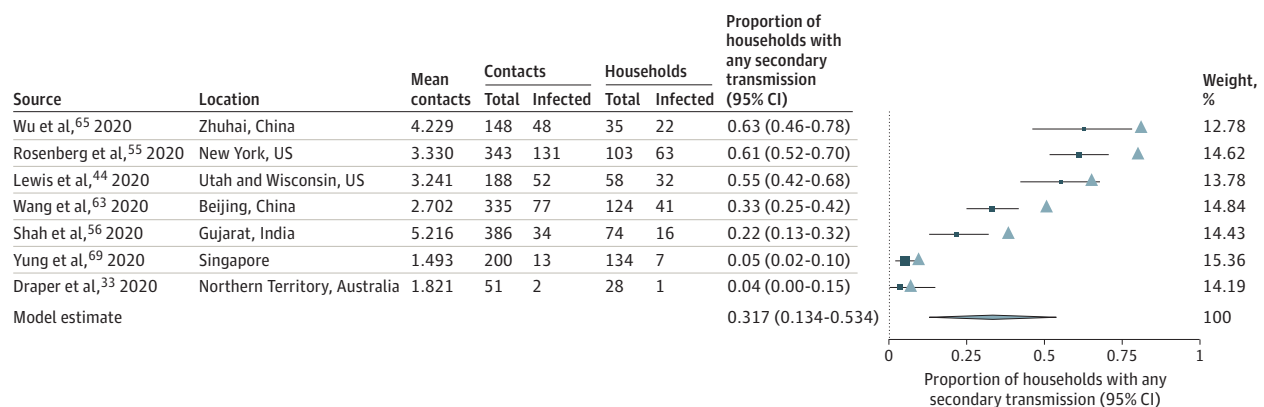
<sup>a</sup> Weights for the combined estimate are available in eTable 8 in the Supplement.

restricted index cases to children (age <18 years), resulting in a substantially lower secondary attack rate of 0.5%. Excluding this outlier, the combined secondary attack rate for household and family contacts was 17.1% (95%, 14.6%-19.7%). Secondary attack rates for household and family contacts were more than 3 times higher than for close contacts (4.8%; 95% CI, 3.4%-6.5%;  $P < .001$ ) (eFigure 2 in the Supplement). Significant heterogeneity was found among studies of household ( $I^2 = 96.9%$ ;  $P < .001$ ), family ( $I^2 = 93.0%$ ;  $P < .001$ ), and close ( $I^2 = 97.0%$ ;  $P < .001$ ) contacts. No significant publication bias was observed for studies of household, family, or close contacts (eFigure 3 in the Supplement). Secondary attack rates were not significantly different when restricting to 38 studies<sup>19,20,22,23,26-31,34-40,42,44-51,54-57,60,62,63,65,67-69,72</sup> with low or moderate risk of bias (15.6%; 95%, 12.8%-18.5%) (eFigure 4 in the Supplement). There were no significant differences in secondary attack rates between 21 studies in China<sup>22,27,31,36,37,39,45,46,48,58,61-68,70-72</sup> and 33 studies from other countries<sup>19-21,23-26,28-30,32-35,38,40-44,47,49-57,59,60,69</sup> (eFigure 5 in the Supplement), 18 studies that tested symptomatic contacts<sup>19-21,24,25,28,29,33,34,41,47,50,53,56,58,59,61,64</sup> and 33 studies that reported testing all contacts<sup>22,23,26,27,30,31,35-40,42-46,48,49,51,52,54,55,57,60,63,65-67,69-72</sup> (eFigure 6 in the Supplement), and 16 early studies<sup>22,23,25,31,37,39,45,58,61,63-66,68,71,72</sup> (January-February) and 20 later studies<sup>19,24,26,29,30,32-35,38,42,44,50,53-56,59,60,69</sup> (March-July) (eFigure 7 in the Supplement).

To study the transmissibility of asymptomatic SARS-CoV-2 index cases, eFigure 8 in the Supplement summarizes 27 studies<sup>19-21,23-26,30,32-34,44,45,47,50,52-54,56,59-61,63,64,68,69,72</sup> reporting household secondary attack rates from symptomatic index cases and 4 studies<sup>26,43,44,52</sup> from asymptomatic or presymptomatic index cases. Estimated mean household secondary attack rate from symptomatic index cases (18.0%; 95% CI, 14.2%-22.1%) was significantly higher than from asymptomatic or presymptomatic index cases (0.7%; 95% CI, 0%-4.9%;  $P < .001$ ), although there were few studies in the latter group. These findings are consistent with other household studies<sup>28,70</sup> reporting asymptomatic index cases as having limited role in household transmission.

There is evidence for clustering of SARS-CoV-2 infections within households, with some households having many secondary infections while many others have none.<sup>73-75</sup> For example, 1 study<sup>55</sup> reported that 26 of 103 (25.2%) households had all members test positive. This is consistent with observation of overdispersion in the number of secondary cases per index case across a range of settings.<sup>3</sup> While most studies reported only the average number of secondary infections per index case, some also reported transmission by household.<sup>44,55,56,63,65,69</sup> Figure 2 summarizes the proportion of households with any secondary transmission. Using an empirical analysis based on secondary attack rates and mean number of contacts per household, we found the proportion of

Figure 2. Mean Number of Contacts per Household, Secondary Attack Rate (SAR) of Severe Acute Respiratory Syndrome Coronavirus 2 (SARS-CoV-2), and Proportion of Households Reporting Any Secondary Transmission From Index Cases



The expected proportion of households with any secondary transmission (represented by the triangles) was calculated as proportion with at least 1 secondary infection in a household =  $1 - (1 - SAR)^n$ , where  $n$  is the mean number of contacts for that study

(eTable 5 in the Supplement). Point sizes are an inverse function of the precision of the estimates, and bars correspond to 95% CIs.

households with any secondary transmission was lower than expected in a setting with no clustering (eg, most transmission is not characterized by a minority of infected individuals) (eTable 5 in the [Supplement](#)). Ideally, future studies will assess this formally by fitting a  $\beta$  binomial to quantify overdispersion in the full data.

A number of studies examined factors associated with susceptibility of household contacts to infection (eTable 6 in the [Supplement](#)). Age was the most examined covariate, with most studies<sup>20,29,36-39,45,46,48,49,55,63,65,68</sup> reporting lower secondary transmission of SARS-CoV-2 to child contacts than adult contacts. In 5 studies,<sup>20,36,39,48,49</sup> individuals older than 60 years were most susceptible to SARS-CoV-2 infection. Contact age was not associated with susceptibility in 9 studies,<sup>26,28,32,44,47,58,66,67,70</sup> although these were typically less powered to detect a difference.

**Figure 3** summarizes 15 studies<sup>22,26,29,37,39,42,44,45,47,49,55,59,60,63,65</sup> reporting separate secondary attack rates to children and adult contacts. The estimated mean household secondary attack rate was significantly higher to adult contacts (28.3%; 95% CI, 20.2%-37.1%) than to child contacts (16.8%; 95% CI, 12.3%-21.7%;  $P < .001$ ). Significant heterogeneity was found among studies of adult ( $I^2 = 96.8\%$ ;  $P < .001$ ) and child contacts ( $I^2 = 78.9\%$ ;  $P < .001$ ). Begg ( $P = .03$ ) and Egger ( $P = .03$ ) tests were statistically significant for studies of adult but not child contacts (eFigure 9 in the [Supplement](#)). One study of adults<sup>63</sup> had a high secondary attack rate in the forest plot. Excluding this study improved the funnel plot symmetry and resulted in a secondary attack rate to adult contacts of 26.3% (95% CI, 19.3%-33.2%).

The second most examined factor was sex of exposed contacts, which was not associated with susceptibility for most studies<sup>20,22,26,32,36,39,44,45,47-49,58,65-67,70</sup> except 3.<sup>38,46,68</sup> eFigure 10 in the [Supplement](#) summarizes results from 11 studies<sup>20,39,42,44,45,47,49,58,65,67,69</sup> reporting household secondary attack rates by contact sex. Estimated mean household secondary attack rate to female contacts (20.7%; 95% CI, 15.0%-26.9%) was not significantly different than to male contacts (17.7%; 95% CI, 12.4%-23.8%). Significant heterogeneity was found among studies of female contacts ( $I^2 = 87.4\%$ ;  $P < .001$ ) and male contacts ( $I^2 = 87.7\%$ ;  $P < .001$ ). Moderate asymmetry was observed in the funnel plots, which was significant for studies of female contacts from Egger test ( $P = .07$ ) but not male contacts (eFigure 11 in the [Supplement](#)). However, imputation of an adjusted effect size using the trim-and-fill method did not significantly change the secondary attack rate to female contacts (19.7%; 95% CI, 13.9%-25.6%).

Spouse relationship to index case was associated with secondary infection in 4 studies<sup>26,45,46,58</sup> of 6 in which this was examined.<sup>65,67</sup> Infection risk was highest for spouses, followed by nonspouse family members and other relatives, which were all higher than other contacts.<sup>46</sup> **Figure 4** summarizes results from 7 studies<sup>26,44-46,58,65,67</sup> reporting household secondary attack rates by relationship. Estimated mean household secondary attack rate to spouses (37.8%; 95% CI, 25.8%-50.5%) was significantly higher than to other contacts (17.8%; 95% CI, 11.7%-24.8%). Significant heterogeneity was found among studies of spouses ( $I^2 = 78.6\%$ ;  $P < .001$ ) and other relationships ( $I^2 = 83.5\%$ ;  $P < .001$ ).

Several studies examined factors associated with infectiousness of index cases. Older index case age was associated with increased secondary infections in 3 studies<sup>20,47,67</sup> of 9 in which this was examined.<sup>22,36,39,44,63,65</sup> eFigure 12 in the [Supplement](#) summarizes results from 3 studies<sup>42,44,51</sup> reporting household secondary attack rates by index case age. Estimated mean household secondary attack rate from adults (15.2%; 95% CI, 6.2%-27.4%) was not significantly different than that from children (7.9%; 95% CI, 1.7%-16.8%). Index case sex was associated with transmission in 3 studies<sup>42,44,67</sup> of 9 in which this was examined.<sup>20,36,45,47,63,65</sup> eFigure 13 in the [Supplement](#) summarizes results from 7 studies<sup>20,42,44,45,65,67,69</sup> reporting household secondary attack rates by index case sex. Estimated mean household secondary attack rate from female contacts (16.6%; 95% CI, 11.2%-22.8%) was not significantly different than from male contacts (16.4%; 95% CI, 9.0%-25.5%).

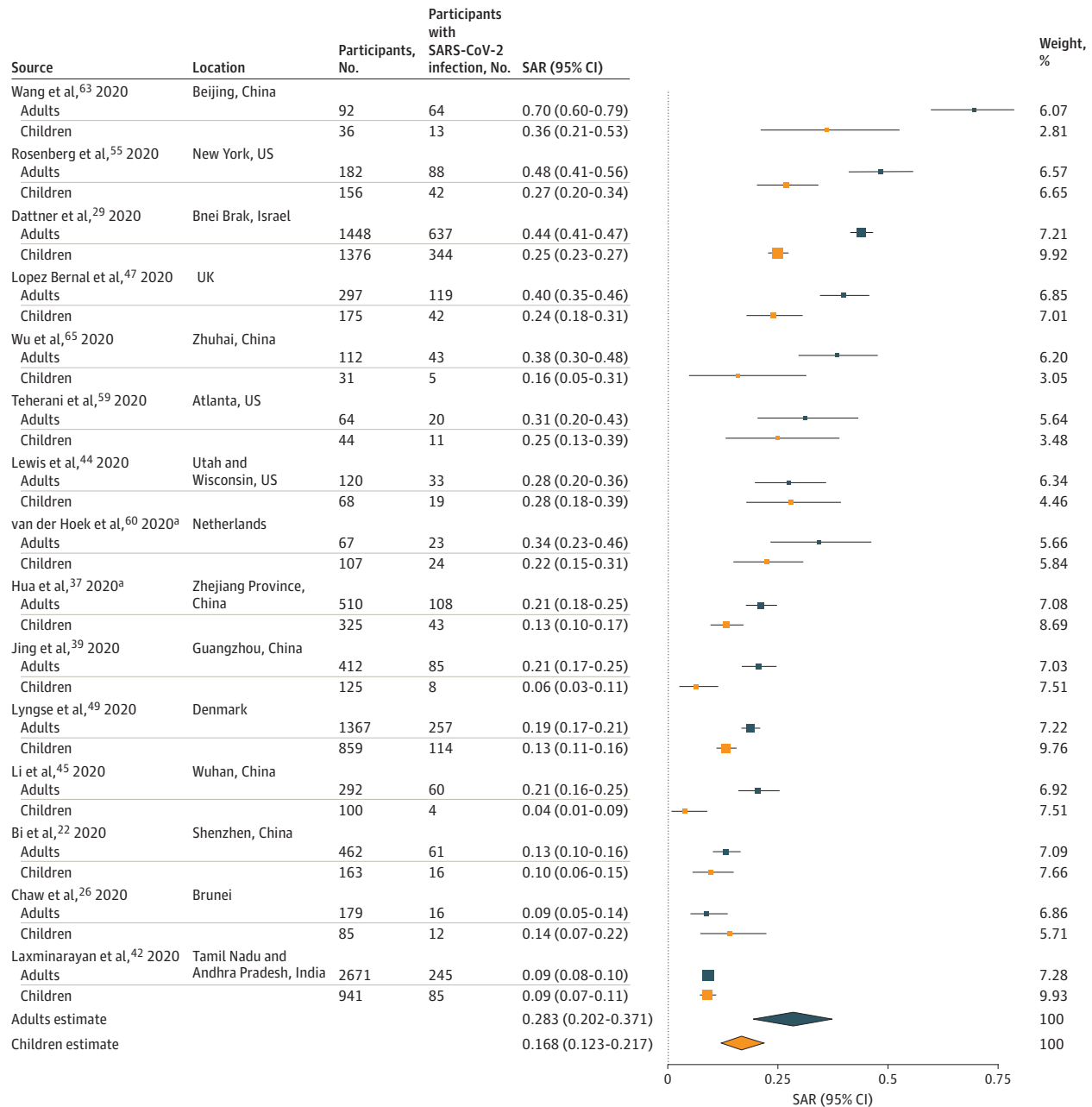
Critically severe index case symptoms was associated with higher infectiousness in 6 studies<sup>20,38,46-48,67</sup> of 9 in which this was examined.<sup>44,63,70</sup> Index case cough was associated with



infectivity in 2 studies<sup>20,65</sup> of 8 in which this was examined<sup>45-48,63,67</sup> (eAppendix 4 in the Supplement).

Contact frequency with the index case was associated with higher odds of infection, specifically at least 5 contacts during 2 days before the index case was confirmed,<sup>70</sup> at least 4 contacts and 1 to 3 contacts,<sup>63</sup> or frequent contact within 1 meter.<sup>22,67,68</sup> Smaller households were associated with transmission in 4 studies<sup>20,39,47,49</sup> of 7 in which this was examined.<sup>55,63,65</sup> **Figure 5** summarizes results from 6 studies<sup>20,47,49,55,61,65</sup> reporting household secondary attack rates by number of

**Figure 3. Secondary Attack Rates (SAR) of Severe Acute Respiratory Syndrome Coronavirus 2 (SARS-CoV-2) for Adult (≥18 Years) and Child (<18 Years) Household and Family Contacts**



Point sizes are an inverse function of the precision of the estimates and bars correspond to 95% CIs.

<sup>a</sup> Study of family contacts.

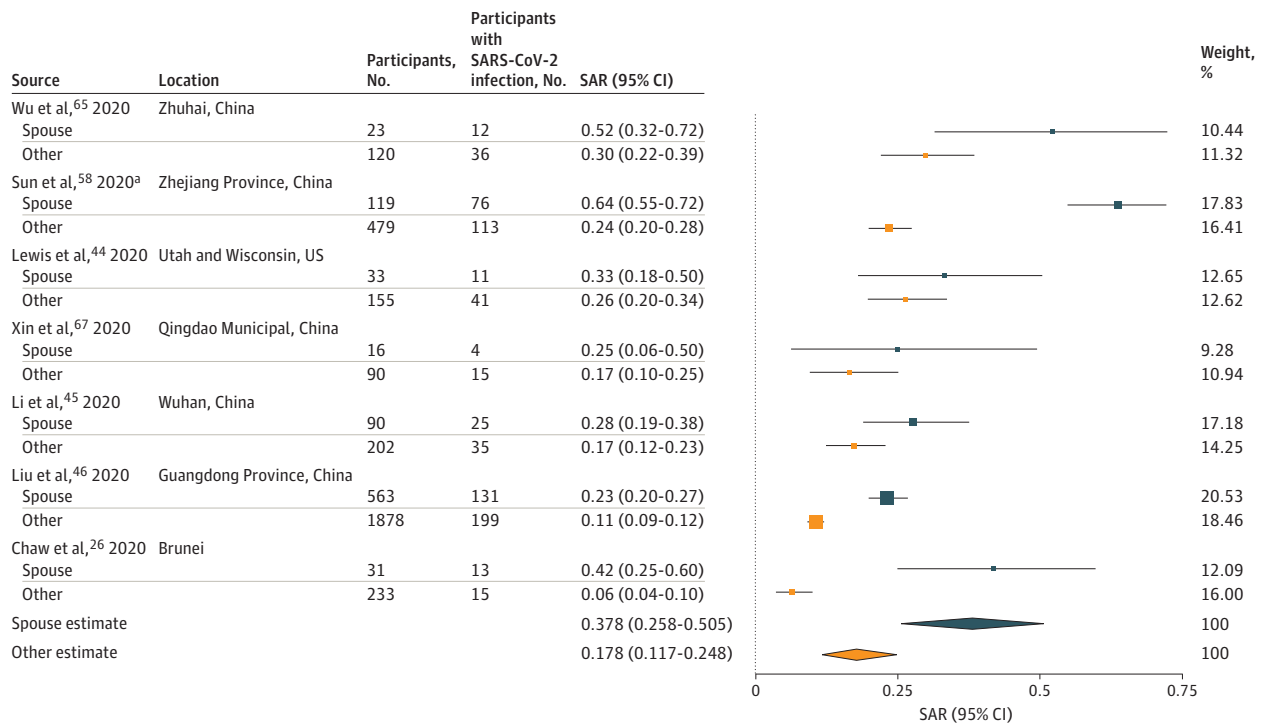
contacts in the household. Estimated mean household secondary attack rate for households with 1 contact (41.5%; 95% CI, 31.7%-51.7%) was significantly higher than households with at least 3 contacts (22.8%; 95% CI, 13.6%-33.5%;  $P < .001$ ) but not different than households with 2 contacts (38.6%; 95% CI, 17.9%-61.6%). There was significant heterogeneity in secondary attack rates between studies with 1 contact ( $I^2 = 52.9%$ ;  $P = .049$ ), 2 contacts ( $I^2 = 93.6%$ ;  $P < .001$ ), or 3 or more contacts ( $I^2 = 91.6%$ ;  $P < .001$ ). Information was not available on household crowding (eg, number of people per room).

eFigure 14 in the Supplement summarizes 7 studies<sup>76-82</sup> reporting household secondary attack rates for SARS-CoV, and 7 studies<sup>83-89</sup> for Middle East respiratory syndrome coronavirus (MERS-CoV). Estimated mean household secondary attack rate was 7.5% (95% CI, 4.8%-10.7%) for SARS-CoV and 4.7% (95% CI, 0.9%-10.7%) for MERS-CoV (eTable 7 in the Supplement), both lower than the household secondary attack rate of 16.6% for SARS-CoV-2 in this study ( $P < .001$ ). The SARS-CoV-2 secondary attack rate was also higher than secondary attack rates reported for HCoV-NL63 (0-12.6%), HCoV-OC43 (10.6-13.2%), HCoV-229E (7.2-14.9%), and HCoV-HKU1 (8.6%).<sup>90-92</sup> Household secondary attack rates for SARS-CoV-2 were within the mid-range of household secondary attack rates reported for influenza, which ranged from 1% to 38% based on polymerase chain reaction-confirmed infection.<sup>93</sup>

## Discussion

We synthesized the available evidence on household studies of SARS-CoV-2. The combined household and family secondary attack rate was 16.6% (95% CI, 14.0%-19.3%), although with significant heterogeneity between studies. This point estimate is higher than previously observed

Figure 4. Secondary Attack Rates (SAR) of Severe Acute Respiratory Syndrome Coronavirus 2 (SARS-CoV-2) for Household and Family Contacts by Relationship to Index Case



Point sizes are an inverse function of the precision of the estimates and bars correspond to 95% CIs.

<sup>a</sup> Study of family contacts.

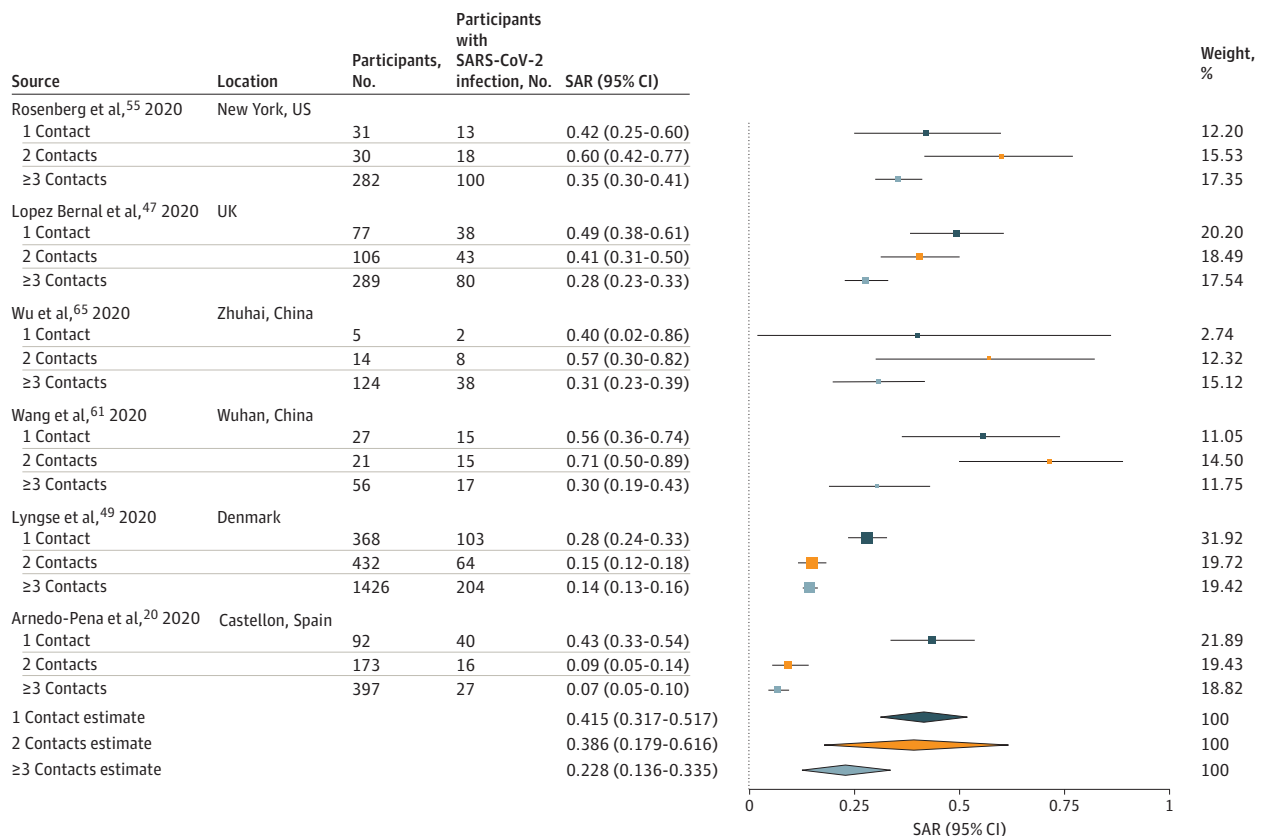


secondary attack rates for SARS-CoV and MERS-CoV. Households are favorable environments for transmission. They are what are known as 3Cs environments, as they are closed spaces, where family members may crowd and be in close contact with conversation.<sup>94</sup> There may be reduced use of personal protective equipment relative to other settings.

That secondary attack rates were not significantly different between household and family contacts may indicate that most family contacts are in the same household as index cases. Household and family contacts are at higher risk than other types of close contacts, and risks are not equal within households. Spouses were at higher risk than other family contacts, which may explain why the secondary attack rate was higher in households with 1 vs 3 or greater contacts. Spouse relationship to the index case was also a significant risk factor observed in studies of SARS-CoV and H1N1.<sup>82,95</sup> This may reflect intimacy, sleeping in the same room, or longer or more direct exposure to index cases. Further investigation is required to determine whether sexual contact is a transmission route. Although not directly assessed, household crowding (eg, number of people per room) may be more important for SARS-CoV-2 transmission than the total number of people per household, as has been demonstrated for influenza.<sup>96-98</sup>

The finding that secondary attack rates were higher to adult contacts than to child contacts is consistent with empirical and modeling studies.<sup>99,100</sup> Lower infection rates in children may be

Figure 5. Secondary Attack Rates (SAR) of Severe Acute Respiratory Syndrome Coronavirus 2 (SARS-CoV-2) by the Number of People Living in the Same Household as the Index Case



Point sizes are an inverse function of the precision of the estimates, and bars correspond to 95% CIs.

attributed to asymptomatic or mild disease, reduced susceptibility from cross-immunity from other coronaviruses,<sup>101</sup> and low case ascertainment,<sup>102</sup> but the difference persisted in studies in which all contacts were tested regardless of symptoms. Higher transmission rates to adults may be influenced by spousal transmission. Given the increased risk to spousal contacts, future studies might compare child contacts and nonspouse adult contacts to ascertain whether this difference persists. Limited data suggest children have not played a substantive role in household transmission of SARS-CoV-2.<sup>40,103-105</sup> However, a study in South Korea of 10 592 household contacts noted relatively high transmission from index cases who were aged 10 to 19 years.<sup>51</sup> Although children seem to be at reduced risk for symptomatic disease, it is still unclear whether they shed virus similarly to adults.<sup>106</sup>

We did not find associations between household contact or index case sex and secondary transmission. The World Health Organization reports roughly even distribution of SARS-CoV-2 infections between women and men worldwide, with higher mortality in men.<sup>107</sup>

We found significantly higher secondary attack rates from symptomatic index cases than asymptomatic or presymptomatic index cases, although less data were available on the latter. The lack of substantial transmission from observed asymptomatic index cases is notable. However, presymptomatic transmission does occur, with some studies reporting the timing of peak infectiousness at approximately the period of symptom onset.<sup>108,109</sup> In countries where infected individuals were isolated outside the home, this could further alter the timing of secondary infections by limiting contacts after illness onset.<sup>110</sup>

Household secondary attack rates were higher for SARS-CoV-2 than SARS-CoV and MERS-CoV, which may be attributed to structural differences in spike proteins,<sup>111</sup> higher basic reproductive rates,<sup>112</sup> and higher viral loads in the nose and throat at the time of symptom onset.<sup>113</sup> Symptoms associated with MERS-CoV and SARS-CoV often require hospitalization, which increases nosocomial transmission, whereas less severe symptoms of SARS-CoV-2 facilitate community transmission.<sup>113</sup> Similarly, presymptomatic transmission was not observed for MERS-CoV or SARS-CoV.<sup>114,115</sup>

## Limitations

Our study had several limitations. The most notable is the large amount of unexplained heterogeneity across studies. This is likely attributable to variability in study definitions of index cases and household contacts, frequency and type of testing, sociodemographic factors, household characteristics (eg, density, air ventilation), and local policies (eg, centralized isolation). Rates of community transmission also varied across locations. Given that studies cannot always rule out infections from outside of the home (eg, nonhousehold contacts), household transmission may be overestimated. For this reason, we excluded studies that used antibody tests to diagnose household contacts. Furthermore, many analyses ignored tertiary transmission within the household, classifying all subsequent cases as secondary to the index case. Eighteen studies<sup>19-21,24,25,28,29,33,34,41,47,50,53,56,58,59,61,64</sup> involved testing only symptomatic household contacts, which would miss asymptomatic or subclinical infections, although secondary attack rate estimates were similar across studies testing all vs only symptomatic contacts.

Important questions remain regarding household spread of SARS-CoV-2. Chief among them is the infectiousness of children to their household contacts and the infectiousness of asymptomatic, mildly ill, and severely ill index cases. This study did not provide additional elucidation of factors influencing intergenerational spread. People unable to work at home may have greater risk of SARS-CoV-2 exposure, which may increase transmission risk to other household members. There may be overdispersion in the number of secondary infections per index case, which could be caused by variations in viral shedding, household ventilation, or other factors.

## Conclusions

The findings of this study suggest that households are and will continue to be important venues for transmission, even where community transmission is reduced. Prevention strategies, such as

increased mask-wearing at home, improved ventilation, voluntary isolation at external facilities, and targeted antiviral prophylaxis, should be further explored.

#### ARTICLE INFORMATION

**Accepted for Publication:** November 6, 2020.

**Published:** December 14, 2020. doi:[10.1001/jamanetworkopen.2020.31756](https://doi.org/10.1001/jamanetworkopen.2020.31756)

**Open Access:** This is an open access article distributed under the terms of the [CC-BY License](https://creativecommons.org/licenses/by/4.0/). © 2020 Madewell ZJ et al. *JAMA Network Open*.

**Corresponding Author:** Zachary J. Madewell, Department of Biostatistics, University of Florida, PO Box 117450, Gainesville, FL 32611 ([zmadewell@ufl.edu](mailto:zmadewell@ufl.edu)).

**Author Affiliations:** Department of Biostatistics, University of Florida, Gainesville (Madewell, Yang, Longini, Dean); Fred Hutchinson Cancer Research Center, Seattle, Washington (Halloran); Department of Biostatistics, University of Washington, Seattle (Halloran).

**Author Contributions:** Drs Madewell and Dean had full access to all of the data in the study and take responsibility for the integrity of the data and the accuracy of the data analysis.

*Concept and design:* Madewell, Longini, Dean.

*Acquisition, analysis, or interpretation of data:* All authors.

*Drafting of the manuscript:* Madewell, Longini, Dean.

*Critical revision of the manuscript for important intellectual content:* All authors.

*Statistical analysis:* All authors.

*Obtained funding:* Dean.

*Administrative, technical, or material support:* Dean.

*Supervision:* Dean.

**Conflict of Interest Disclosures:** None reported.

**Funding/Support:** This work was supported by grant R01-AI139761 from the National Institutes of Health.

**Role of the Funder/Sponsor:** The funder had no role in the design and conduct of the study; collection, management, analysis, and interpretation of the data; preparation, review, or approval of the manuscript; and decision to submit the manuscript for publication.

#### REFERENCES

1. World Health Organization. Transmission of SARS-CoV-2: implications for infection prevention precautions. Published July 9, 2020. Accessed November 11, 2020. <https://www.who.int/news-room/commentaries/detail/transmission-of-sars-cov-2-implications-for-infection-prevention-precautions>
2. Oran DP, Topol EJ. Prevalence of asymptomatic SARS-CoV-2 infection: a narrative review. *Ann Intern Med*. 2020;173(5):362-367. doi:[10.7326/M20-3012](https://doi.org/10.7326/M20-3012)
3. Nishiura H, Oshitani H, Kobayashi T, et al. Closed environments facilitate secondary transmission of coronavirus disease 2019 (COVID-19). *medRxiv*. Preprint published online April 16, 2020. doi:[10.1101/2020.02.28.20029272](https://doi.org/10.1101/2020.02.28.20029272)
4. World Health Organization. Report of the WHO-China Joint Mission on Coronavirus Disease 2019 (COVID-19). February 16-24, 2020. Accessed November 11, 2020. <https://www.who.int/docs/default-source/coronaviruse/who-china-joint-mission-on-covid-19-final-report.pdf>
5. Badr HS, Du H, Marshall M, Dong E, Squire MM, Gardner LM. Association between mobility patterns and COVID-19 transmission in the USA: a mathematical modelling study. *Lancet Infect Dis*. 2020;20(11):1247-1254. doi:[10.1016/S1473-3099\(20\)30553-3](https://doi.org/10.1016/S1473-3099(20)30553-3)
6. Drake TM, Docherty AB, Weiser TG, Yule S, Sheikh A, Harrison EM. The effects of physical distancing on population mobility during the COVID-19 pandemic in the UK. *Lancet Digit Health*. 2020;2(8):e385-e387. doi:[10.1016/S2589-7500\(20\)30134-5](https://doi.org/10.1016/S2589-7500(20)30134-5)
7. Fang H, Wang L, Yang Y. Human mobility restrictions and the spread of the novel coronavirus (2019-nCoV) in China. National Bureau of Economic Research. Published March 2020. Accessed November 11, 2020. <https://www.nber.org/papers/w26906>
8. Curmei M, Ilyas A, Evans O, Steinhardt J. Estimating household transmission of SARS-CoV-2. *medRxiv*. Preprint published online June 27, 2020. doi:[10.1101/2020.05.23.20111559](https://doi.org/10.1101/2020.05.23.20111559)

9. US Centers for Disease Control and Prevention. Coronavirus disease 2019 (COVID-19): how to protect yourself and others. Updated November 4, 2020. Accessed November 11, 2020. <https://www.cdc.gov/coronavirus/2019-ncov/prevent-getting-sick/prevention.html>
10. Wells G. The Newcastle-Ottawa Scale (NOS) for assessing the quality of nonrandomised studies in meta-analysis. Accessed November 11, 2020. [http://www.ohri.ca/programs/clinical\\_epidemiology/oxford.asp](http://www.ohri.ca/programs/clinical_epidemiology/oxford.asp)
11. Fung HF, Martinez L, Alarid-Escudero F, et al; SC-COSMO Modeling Group. The household secondary attack rate of SARS-CoV-2: a rapid review. *Clin Infect Dis*. Published online October 12, 2020;ciaa1558. doi:10.1093/cid/ciaa1558
12. Freeman MF, Tukey JW. Transformations related to the angular and the square root. *Annals Math Stat*. 1950;21(4):607-611. doi:10.1214/aoms/1177729756
13. Higgins JP, Thompson SG, Deeks JJ, Altman DG. Measuring inconsistency in meta-analyses. *BMJ*. 2003;327(7414):557-560. doi:10.1136/bmj.327.7414.557
14. Viechtbauer W. Conducting meta-analyses in R with the metafor package. *J Stat Software*. 2010;36(3):1-48. doi:10.18637/jss.v036.i03
15. R Core Team. R: a language and environment for statistical computing. Accessed November 13, 2020. <https://www.gbif.org/tool/81287/r-a-language-and-environment-for-statistical-computing>
16. Begg CB, Mazumdar M. Operating characteristics of a rank correlation test for publication bias. *Biometrics*. 1994;50(4):1088-1101. doi:10.2307/2533446
17. Egger M, Davey Smith G, Schneider M, Minder C. Bias in meta-analysis detected by a simple, graphical test. *BMJ*. 1997;315(7109):629-634. doi:10.1136/bmj.315.7109.629
18. Duval S, Tweedie R. Trim and fill: a simple funnel-plot-based method of testing and adjusting for publication bias in meta-analysis. *Biometrics*. 2000;56(2):455-463. doi:10.1111/j.0006-341X.2000.00455.x
19. Adamik B, Bawiec M, Bezborodov V, et al. Bounds on the total number of SARS-CoV-2 infections: the link between severeness rate, household attack rate and the number of undetected cases. Published August 15, 2020. Accessed November 11, 2020. <https://docisolation.prod.fire.glass/?guid=8579b2af-bdb0-4d1f-f538-bc52f86d984e>
20. Arnedo-Pena A, Sabater-Vidal S, Meseguer-Ferrer N, et al. COVID-19 secondary attack rate and risk factors in household contacts in Castellon (Spain): preliminary report. *Enfermedades Emergentes*. 2020;19(2):64-70. Accessed November 11, 2020. <https://docisolation.prod.fire.glass/?guid=45f61a53-bdcc-40ab-ded8-dd9646aa077c>
21. Bae S, Kim H, Jung T-Y, et al. Epidemiological characteristics of COVID-19 outbreak at fitness centers in Cheonan, Korea. *J Korean Med Sci*. 2020;35(31):e288. doi:10.3346/jkms.2020.35.e288
22. Bi Q, Wu Y, Mei S, et al. Epidemiology and transmission of COVID-19 in 391 cases and 1286 of their close contacts in Shenzhen, China: a retrospective cohort study. *Lancet Infect Dis*. 2020;20(8):911-919. doi:10.1016/S1473-3099(20)30287-5
23. Böhmer MM, Buchholz U, Corman VM, et al. Investigation of a COVID-19 outbreak in Germany resulting from a single travel-associated primary case: a case series. *Lancet Infect Dis*. 2020;20(8):920-928. doi:10.1016/S1473-3099(20)30314-5
24. Boscolo-Rizzo P, Borsetto D, Spinato G, et al. New onset of loss of smell or taste in household contacts of home-isolated SARS-CoV-2-positive subjects. *Eur Arch Otorhinolaryngol*. 2020;277(9):2637-2640. doi:10.1007/s00405-020-06066-9
25. Burke RM. Active monitoring of persons exposed to patients with confirmed COVID-19—United States, January-February 2020. *MMWR Morb Mortal Wkly Rep*. 2020;69:245-246. doi:10.15585/mmwr.mm6909e1
26. Chaw L, Koh WC, Jamaludin SA, Naing L, Alikhan MF, Wong J. SARS-CoV-2 transmission in different settings: analysis of cases and close contacts from the Tablighi cluster in Brunei Darussalam. *Emerg Infect Dis*. 2020;26(11):2598-2606. doi:10.3201/eid2611.202263
27. Chen Y, Wang AH, Yi B, et al. [Epidemiological characteristics of infection in COVID-19 close contacts in Ningbo city]. *Zhonghua Liu Xing Bing Xue Za Zhi*. 2020;41(5):667-671. doi:10.3760/cma.j.cn112338-20200304-00251
28. Cheng HY, Jian SW, Liu DP, Ng TC, Huang WT, Lin HH; Taiwan COVID-19 Outbreak Investigation Team. Contact tracing assessment of COVID-19 transmission dynamics in Taiwan and risk at different exposure periods before and after symptom onset. *JAMA Intern Med*. 2020;180(9):1156-1163. doi:10.1001/jamainternmed.2020.2020
29. Dattner I, Goldberg Y, Katriel G, et al. The role of children in the spread of COVID-19: Using household data from Bnei Brak, Israel, to estimate the relative susceptibility and infectivity of children. *medRxiv*. Preprint published online October 11, 2020. doi:10.1101/2020.06.03.20121145
30. Dawson P, Rabold EM, Laws RL, et al. Loss of taste and smell as distinguishing symptoms of COVID-19. *Clin Infect Dis*. 2020;ciaa799. doi:10.1093/cid/ciaa799

31. Dong XC, Li JM, Bai JY, et al. [Epidemiological characteristics of confirmed COVID-19 cases in Tianjin]. *Zhonghua Liu Xing Bing Xue Za Zhi*. 2020;41(5):638-641. doi:10.3760/cma.j.cn112338-20200221-00146
32. Doung-ngern P, Suphanchaimat R, Panjagampathana A, et al. Case-control study of use of personal protective measures and risk for SARS-CoV 2 infection, Thailand. *Emerg Infect Dis*. 2020;26(11):2607-2616. doi:10.3201/eid2611.203003
33. Draper AD, Dempsey KE, Boyd RH, et al. The first 2 months of COVID-19 contact tracing in the Northern Territory of Australia, March-April 2020. *Commun Dis Intell (2018)*. 2020;44:44.
34. Fateh-Moghadam P, Battisti L, Molinaro S, et al. Contact tracing during phase I of the COVID-19 pandemic in the Province of Trento, Italy: key findings and recommendations. *medRxiv*. Preprint published online July 29, 2020. doi:10.1101/2020.07.16.20127357
35. Han T. Outbreak investigation: transmission of COVID-19 started from a spa facility in a local community in Korea. *Epidemiol Health*. 2020;42(O):e2020056-e2020050. doi:10.4178/epih.e2020056
36. Hu S, Wang W, Wang Y, et al. Infectivity, susceptibility, and risk factors associated with SARS-CoV-2 transmission under intensive contact tracing in Hunan, China. *medRxiv*. Preprint published online November 3, 2020. doi:10.1101/2020.07.23.20160317
37. Hua CZ, Miao ZP, Zheng JS, et al. Epidemiological features and viral shedding in children with SARS-CoV-2 infection. *J Med Virol*. Published online June 15, 2020. doi:10.1002/jmv.26180
38. Islam SS, Noman ASM. Transmission dynamics and contact tracing assessment of COVID-19 in Chattogram, Bangladesh and potential risk of close contacts at different exposure settings. Published October 12, 2020. Accessed November 11, 2020. [https://papers.ssrn.com/sol3/papers.cfm?abstract\\_id=3677863](https://papers.ssrn.com/sol3/papers.cfm?abstract_id=3677863)
39. Jing Q-L, Liu M-J, Zhang ZB, et al. Household secondary attack rate of COVID-19 and associated determinants in Guangzhou, China: a retrospective cohort study. *Lancet Infect Dis*. 2020;20(10):1141-1150. doi:10.1016/S1473-3099(20)30471-0
40. Kim J, Choe YJ, Lee J, et al. Role of children in household transmission of COVID-19. *Arch Dis Child*. 2020; archdischild-2020-319910. doi:10.1136/archdischild-2020-319910
41. COVID-19 National Emergency Response Center, Epidemiology and Case Management Team, Korea Centers for Disease Control and Prevention. Coronavirus disease-19: summary of 2,370 contact investigations of the first 30 cases in the Republic of Korea. *Osong Public Health Res Perspect*. 2020;11(2):81-84. doi:10.24171/j.phrp.2020.11.2.04
42. Laxminarayan R, Wahl B, Dudala SR, et al. Epidemiology and transmission dynamics of COVID-19 in two Indian states. *Science*. 2020;370(6517):691-697. doi:10.1126/science.abd7672
43. Lee M, Eun Y, Park K, Heo J, Son H. Follow-up investigation of asymptomatic COVID-19 cases at diagnosis in Busan, Korea. *Epidemiol Health*. 2020;42:e2020046. doi:10.4178/epih.e2020046
44. Lewis NM, Chu VT, Ye D, et al. Household transmission of SARS-CoV-2 in the United States. *Clin Infect Dis*. Published online August 16, 2020. doi:10.1093/cid/ciaa1166
45. Li W, Zhang B, Lu J, et al. Characteristics of household transmission of COVID-19. *Clin Infect Dis*. 2020;71(8):1943-1946. doi:10.1093/cid/ciaa450
46. Liu T, Liang W, Zhong H, et al. Risk factors associated with COVID-19 infection: a retrospective cohort study based on contacts tracing. *Emerg Microbes Infect*. 2020;9(1):1546-1553. doi:10.1080/22221751.2020.1787799
47. Lopez Bernal J, Panagiotopoulos N, Byers C, et al. Transmission dynamics of COVID-19 in household and community settings in the United Kingdom. *medRxiv*. Preprint published online August 22, 2020. doi:10.1101/2020.08.19.20177188
48. Luo L, Liu D, Liao X, et al. Contact settings and risk for transmission in 3410 close contacts of patients with COVID-19 in Guangzhou, China: a prospective cohort study. *Ann Intern Med*. Published August 13, 2020. doi:10.7326/M20-2671
49. Lyngse FP, Kirkeby CT, Halasa T, et al. COVID-19 transmission within Danish households: a nationwide study from lockdown to reopening. *medRxiv*. Preprint published online September 9, 2020. doi:10.1101/2020.09.09.20191239
50. Malheiro R, Figueiredo AL, Magalhães JP, et al. Effectiveness of contact tracing and quarantine on reducing COVID-19 transmission: a retrospective cohort study. *Public Health*. 2020;189:54-59. doi:10.1016/j.puhe.2020.09.012
51. Park YJ, Choe YJ, Park O, et al; COVID-19 National Emergency Response Center, Epidemiology and Case Management Team. Contact tracing during coronavirus disease outbreak, South Korea, 2020. *Emerg Infect Dis*. 2020;26(10):2465-2468. doi:10.3201/eid2610.201315

52. Park SY, Kim Y-M, Yi S, et al. Coronavirus disease outbreak in call center, South Korea. *Emerg Infect Dis*. 2020; 26(8):1666-1670. doi:10.3201/eid2608.201274
53. Patel A, Charani E, Ariyanayagam D, et al. New-onset anosmia and ageusia in adult patients diagnosed with SARS-CoV-2 infection. *Clin Microbiol Infect*. Published online June 2 2020.
54. Phiriyasart F, Chantutanon S, Salaeh F, et al. Outbreak investigation of coronavirus disease (COVID-19) among Islamic missionaries in southern Thailand, April 2020. *Outbreak, Surveillance, Investigation, and Response (OSIR) Journal*. 2020;13(2). Accessed November 11, 2020. <http://www.osirjournal.net/index.php/osir/article/view/195>
55. Rosenberg ES, Dufort EM, Blog DS, et al; New York State Coronavirus 2019 Response Team. COVID-19 testing, epidemic features, hospital outcomes, and household prevalence, New York State—March 2020. *Clin Infect Dis*. 2020;71(8):1953-1959. doi:10.1093/cid/ciaa549
56. Shah K, Desai N, Saxena D, Mavalankar D, Mishra U, Patel GC. Household secondary attack rate in Gandhinagar district of Gujarat state from Western India. *medRxiv*. Preprint published online September 5, 2020. doi:10.1101/2020.09.03.20187336
57. Son H, Lee H, Lee M, et al. Epidemiological characteristics of and containment measures for COVID-19 in Busan, South Korea. *Epidemiology and Health*. 2020;42:e2020035. doi:10.4178/epih.e2020035
58. Sun WW, Ling F, Pan JR, et al. [Epidemiological characteristics of COVID-19 family clustering in Zhejiang Province]. *Zhonghua Yu Fang Yi Xue Za Zhi*. 2020;54(6):625-629. doi:10.3760/cma.j.cn112150-20200227-00199
59. Teherani MF, Kao CM, Camacho-Gonzalez A, et al. Burden of illness in households with SARS-CoV-2 infected children. *J Pediatric Infect Dis Soc*. 2020;9(5):613-616. doi:10.1093/jpids/piaa097
60. van der Hoek W, Backer JA, Bodewes R, et al. [The role of children in the transmission of SARS-CoV-2]. *Ned Tijdschr Geneeskd*. 2020;164:D5140.
61. Wang Z, Ma W, Zheng X, Wu G, Zhang R. Household transmission of SARS-CoV-2. *J Infect*. 2020;81(1):179-182. doi:10.1016/j.jinf.2020.03.040
62. Wang X, Pan Y, Zhang D, et al. Basic epidemiological parameter values from data of real-world in mega-cities: the characteristics of COVID-19 in Beijing, China. *BMC Infect Dis*. 2020;20(1):526. doi:10.1186/s12879-020-05251-9
63. Wang Y, Tian H, Zhang L, et al. Reduction of secondary transmission of SARS-CoV-2 in households by face mask use, disinfection and social distancing: a cohort study in Beijing, China. *BMJ Glob Health*. 2020;5(5):e002794. doi:10.1136/bmjgh-2020-002794
64. Wang X, Zhou Q, He Y, et al. Nosocomial outbreak of COVID-19 pneumonia in Wuhan, China. *Eur Respir J*. 2020;55(6):2000544. doi:10.1183/13993003.00544-2020
65. Wu J, Huang Y, Tu C, et al. Household transmission of SARS-CoV-2, Zhuhai, China, 2020. *Clin Infect Dis*. Published online May 11, 2020;ciaa557. doi:10.1093/cid/ciaa557
66. Wu Y, Song S, Kao Q, Kong Q, Sun Z, Wang B. Risk of SARS-CoV-2 infection among contacts of individuals with COVID-19 in Hangzhou, China. *Public Health*. 2020;185:57-59. doi:10.1016/j.puhe.2020.05.016
67. Xin H, Jiang F, Xue A, et al. Risk factors associated with occurrence of COVID-19 among household persons exposed to patients with confirmed COVID-19 in Qingdao Municipal, China. *Transbound Emerg Dis*. 2020. doi:10.1111/tbed.13743
68. Yu HJ, Hu YF, Liu XX, et al. Household infection: the predominant risk factor for close contacts of patients with COVID-19. *Travel Med Infect Dis*. 2020;36:101809. doi:10.1016/j.tmaid.2020.101809
69. Yung CF, Kam KQ, Chong CY, et al. Household transmission of SARS-CoV-2 from adults to children. *J Ped*. 2020;225:249-251. doi:10.1016/j.jpeds.2020.07.009
70. Zhang W, Cheng W, Luo L, et al. Secondary transmission of coronavirus disease from presymptomatic persons, China. *Emerg Infect Dis*. 2020;26(8):1924-1926. doi:10.3201/eid2608.201142
71. Zhang JZ, Zhou P, Han DB, et al. [Investigation on a cluster epidemic of COVID-19 in a supermarket in Liaocheng, Shandong province]. *Zhonghua Liu Xing Bing Xue Za Zhi*. Published April 27, 2020.
72. Zhuang YL, Zhang YT, Li M, et al. [Analysis on the cluster epidemic of coronavirus disease 2019 in Guangdong Province]. *Zhonghua Yu Fang Yi Xue Za Zhi*. 2020;54(7):720-725.
73. Stringhini S, Wisniak A, Piumatti G, et al. Seroprevalence of anti-SARS-CoV-2 IgG antibodies in Geneva, Switzerland (SEROCoV-POP): a population-based study. *Lancet*. 2020;396(10247):313-319. doi:10.1016/S0140-6736(20)31304-0
74. Yang K, Wang L, Li F, et al. Analysis of epidemiological characteristics of coronavirus 2019 infection and preventive measures in Shenzhen China: a heavy population city. *medRxiv*. Preprint published online March 3, 2020. doi:10.1101/2020.02.28.20028555



75. Fontanet A, Grant R, Tondeur L, et al. SARS-CoV-2 infection in primary schools in northern France: A retrospective cohort study in an area of high transmission. *medRxiv*. Preprint published online June 29, 2020. doi:10.1101/2020.06.25.20140178
76. Chan LY, Wong JT, Li PK, Lui SF, Fung H, Sung J. Risk of transmission of severe acute respiratory syndrome to household contacts by infected health care workers and patients. *Am J Med*. 2004;116(8):559-560. doi:10.1016/j.amjmed.2003.11.011
77. Goh DL, Lee BW, Chia KS, et al. Secondary household transmission of SARS, Singapore. *Emerg Infect Dis*. 2004;10(2):232-234. doi:10.3201/eid1002.030676
78. Lau JT, Lau M, Kim JH, Tsui HY, Tsang T, Wong TW. Probable secondary infections in households of SARS patients in Hong Kong. *Emerg Infect Dis*. 2004;10(2):235-243. doi:10.3201/eid1002.030626
79. Wilson-Clark SD, Deeks SL, Gournis E, et al. Household transmission of SARS, 2003. *CMAJ*. 2006;175(10):1219-1223. doi:10.1503/cmaj.050876
80. Ou J, Li Q, Zeng G, Dun Z; Centers for Disease Control and Prevention (CDC). Efficiency of quarantine during an epidemic of severe acute respiratory syndrome—Beijing, China, 2003. *MMWR Morb Mortal Wkly Rep*. 2003;52(43):1037-1040.
81. Tuan PA, Horby P, Dinh PN, et al; WHO SARS Investigation Team in Vietnam. SARS transmission in Vietnam outside of the health-care setting. *Epidemiol Infect*. 2007;135(3):392-401. doi:10.1017/S0950268806006996
82. Pang X, Zhu Z, Xu F, et al. Evaluation of control measures implemented in the severe acute respiratory syndrome outbreak in Beijing, 2003. *JAMA*. 2003;290(24):3215-3221. doi:10.1001/jama.290.24.3215
83. Al Hosani FI, Kim L, Khudhair A, et al. Serologic follow-up of Middle East respiratory syndrome coronavirus cases and contacts—Abu Dhabi, United Arab Emirates. *Clin Infect Dis*. 2019;68(3):409-418. doi:10.1093/cid/ciy503
84. Arwady MA, Alraddadi B, Basler C, et al. Middle East respiratory syndrome coronavirus transmission in extended family, Saudi Arabia, 2014. *Emerg Infect Dis*. 2016;22(8):1395-1402. doi:10.3201/eid2208.152015
85. Assiri A, McGeer A, Perl TM, et al; KSA MERS-CoV Investigation Team. Hospital outbreak of Middle East respiratory syndrome coronavirus. *N Engl J Med*. 2013;369(5):407-416. doi:10.1056/NEJMoa1306742
86. Drosten C, Meyer B, Müller MA, et al. Transmission of MERS-coronavirus in household contacts. *N Engl J Med*. 2014;371(9):828-835. doi:10.1056/NEJMoa1405858
87. Memish ZA, Al-Tawfiq JA, Alhakeem RF, et al. Middle East respiratory syndrome coronavirus (MERS-CoV): a cluster analysis with implications for global management of suspected cases. *Travel Med Infect Dis*. 2015;13(4):311-314. doi:10.1016/j.tmaid.2015.06.012
88. Payne DC, Biggs HM, Al-Abdallat MM, et al. Multihospital outbreak of a Middle East respiratory syndrome coronavirus deletion variant, Jordan: a molecular, serologic, and epidemiologic investigation. *Open Forum Infect Dis*. 2018;5(5):ofy095. doi:10.1093/ofid/ofy095
89. Van Kerkhove MD, Alaswad S, Assiri A, et al. Transmissibility of MERS-CoV infection in closed setting, Riyadh, Saudi Arabia, 2015. *Emerg Infect Dis*. 2019;25(10):1802-1809. doi:10.3201/eid2510.190130
90. Esposito S, Bosis S, Niesters HG, et al. Impact of human coronavirus infections in otherwise healthy children who attended an emergency department. *J Med Virol*. 2006;78(12):1609-1615. doi:10.1002/jmv.20745
91. Monto AS, DeJonge PM, Callear AP, et al. Coronavirus occurrence and transmission over 8 years in the HIVE cohort of households in Michigan. *J Infect Dis*. 2020;222(1):9-16. doi:10.1093/infdis/jiaa161
92. Beale S, Lewer D, Aldridge RW, et al. Household transmission of seasonal coronavirus infections: results from the Flu Watch cohort study. *Wellcome Open Research*. 2020;5(145):145. doi:10.12688/wellcomeopenres.16055.1
93. Tsang TK, Lau LLH, Cauchemez S, Cowling BJ. Household transmission of influenza virus. *Trends Microbiol*. 2016;24(2):123-133. doi:10.1016/j.tim.2015.10.012
94. Ministry of Health, Labour, and Welfare. Avoid the "Three Cs"! Accessed August 5, 2020. <https://www.mhlw.go.jp/content/10900000/000619576.pdf>
95. Pang X, Yang P, Li S, et al. Pandemic (H1N1) 2009 among quarantined close contacts, Beijing, People's Republic of China. *Emerg Infect Dis*. 2011;17(10):1824-1830. doi:10.3201/eid1710.101344
96. Tam K, Yousey-Hindes K, Hadler JL. Influenza-related hospitalization of adults associated with low census tract socioeconomic status and female sex in New Haven County, Connecticut, 2007-2011. *Influenza Other Respir Viruses*. 2014;8(3):274-281. doi:10.1111/irv.12231
97. Chandrasekhar R, Sloan C, Mitchel E, et al. Social determinants of influenza hospitalization in the United States. *Influenza Other Respir Viruses*. 2017;11(6):479-488. doi:10.1111/irv.12483

98. Sloan C, Chandrasekhar R, Mitchel E, Schaffner W, Lindegren ML. Socioeconomic disparities and influenza hospitalizations, Tennessee, USA. *Emerg Infect Dis*. 2015;21(9):1602-1610. doi:10.3201/eid2109.141861
99. Viner RM, Mytton OT, Bonell C, et al. Susceptibility to SARS-CoV-2 infection among children and adolescents compared with adults: a systematic review and meta-analysis. *JAMA Pediatr*. Published September 25, 2020. doi:10.1001/jamapediatrics.2020.4573
100. Davies NG, Klepac P, Liu Y, Prem K, Jit M, Eggo RM; CMMID COVID-19 working group. Age-dependent effects in the transmission and control of COVID-19 epidemics. *Nat Med*. 2020;26(8):1205-1211. doi:10.1038/s41591-020-0962-9
101. Huang AT, Garcia-Carreras B, Hitchings MDT, et al. A systematic review of antibody mediated immunity to coronaviruses: kinetics, correlates of protection, and association with severity. *Nat Commun*. 2020;11(1):4704. doi:10.1038/s41467-020-18450-4
102. Mehta NS, Mytton OT, Mullins EWS, et al. SARS-CoV-2 (COVID-19): what do we know about children? a systematic review. *Clin Infect Dis*. Published May 11, 2020;ciaa556. doi:10.1093/cid/ciaa556
103. Posfay-Barbe KM, Wagner N, Gauthey M, et al. COVID-19 in children and the dynamics of infection in families. *Pediatrics*. 2020;146(2):e20201576. doi:10.1542/peds.2020-1576
104. Lee B, Raszka WV Jr. COVID-19 transmission and children: the child is not to blame. *Pediatrics*. 2020;146(2):e2020004879. doi:10.1542/peds.2020-004879
105. Zhu Y, Bloxham CJ, Hulme KD, et al. Children are unlikely to have been the primary source of household SARS-CoV-2 infections. *medRxiv*. Preprint published online March 30, 2020. doi:10.1101/2020.03.26.20044826
106. L'Huillier AG, Torriani G, Pigny F, Kaiser L, Eckerle I. Culture-competent SARS-CoV-2 in nasopharynx of symptomatic neonates, children, and adolescents. *Emerg Infect Dis*. 2020;26(10):2494-2497. doi:10.3201/eid2610.202403
107. World Health Organization. Gender and COVID-19. Published May 14, 2020. Accessed November 11, 2020. <https://www.who.int/publications/i/item/gender-and-covid-19>
108. Walsh KA, Jordan K, Clyne B, et al. SARS-CoV-2 detection, viral load and infectivity over the course of an infection. *J Infect*. 2020;81(3):357-371. doi:10.1016/j.jinf.2020.06.067
109. He X, Lau EHY, Wu P, et al. Temporal dynamics in viral shedding and transmissibility of COVID-19. *Nat Med*. 2020;26(5):672-675. doi:10.1038/s41591-020-0869-5
110. Ali ST, Wang L, Lau EHY, et al. Serial interval of SARS-CoV-2 was shortened over time by nonpharmaceutical interventions. *Science*. 2020;369(6507):1106-1109. doi:10.1126/science.abc9004
111. Rabaan AA, Al-Ahmed SH, Haque S, et al. SARS-CoV-2, SARS-CoV, and MERS-CoV: a comparative overview. *Infez Med*. 2020;28(2):174-184.
112. Petersen E, Koopmans M, Go U, et al. Comparing SARS-CoV-2 with SARS-CoV and influenza pandemics. *Lancet Infect Dis*. 2020;20(9):e238-e244. doi:10.1016/S1473-3099(20)30484-9
113. Petrosillo N, Viceconte G, Ergonul O, Ippolito G, Petersen E. COVID-19, SARS and MERS: are they closely related? *Clin Microbiol Infect*. 2020;26(6):729-734. doi:10.1016/j.cmi.2020.03.026
114. Fraser C, Riley S, Anderson RM, Ferguson NM. Factors that make an infectious disease outbreak controllable. *Proc Natl Acad Sci U S A*. 2004;101(16):6146-6151. doi:10.1073/pnas.0307506101
115. Cowling BJ, Park M, Fang VJ, Wu P, Leung GM, Wu JT. Preliminary epidemiological assessment of MERS-CoV outbreak in South Korea, May to June 2015. *Euro Surveill*. 2015;20(25):7-13. doi:10.2807/1560-7917.ES2015.20.25.21163

#### SUPPLEMENT.

**eFigure 1.** PRISMA Flow Diagram for Review of Household Secondary Attack of SARS-CoV-2, MERS-CoV, SARS-CoV, and Other Coronaviruses

**eFigure 2.** Secondary Attack Rates of SARS-CoV-2 for Studies of Close Contacts

**eFigure 3.** Funnel Plots of Studies Reporting Secondary Attack Rates of SARS-CoV-2 for Household, Family, and Close Contacts

**eFigure 4.** Household Secondary Attack Rates of SARS-CoV-2, Restricted to Studies With Low or Moderate Risk of Bias as Determined by the Modified Newcastle-Ottawa Scale

**eFigure 5.** Household Secondary Attack Rates of SARS-CoV-2, Grouped by Studies in China vs Other Locations

**eFigure 6.** Secondary Attack Rates of SARS-CoV-2, Grouped by Studies That Tested Only Symptomatic Household Contacts and Studies That Tested All Household Contacts Irrespective of Symptoms

**eFigure 7.** Household Secondary Attack Rates of SARS-CoV-2, Grouped by Studies Early (January-February) and Later (March-July) in the Pandemic

- eFigure 8.** Secondary Attack Rates of SARS-CoV-2 From Symptomatic and Asymptomatic or Presymptomatic Index Cases to Household and Family Contacts
- eFigure 9.** Funnel Plots of Studies Reporting Household Secondary Attack Rates of SARS-CoV-2 for Adult ( $\geq 18$  Years) and Child ( $< 18$  Years) Contacts
- eFigure 10.** Secondary Attack Rates of SARS-CoV-2 for Household and Family Contacts by Contact Sex
- eFigure 11.** Funnel Plots of Studies Reporting Household Secondary Attack Rates of SARS-CoV-2 for Female and Male Contacts
- eFigure 12.** Secondary Attack Rates of SARS-CoV-2 to Household Contacts From Adult ( $\geq 18$  Years) and Child ( $< 18$  Years) Index Cases
- eFigure 13.** Secondary Attack Rates of SARS-CoV-2 for Household Contacts by Index Case Sex
- eFigure 14.** Household Secondary Attack Rates of SARS-CoV and MERS-CoV
- eTable 1.** Electronic Databases and Search Strategy for Household Secondary Attack Rate of SARS-CoV-2, MERS-CoV, SARS-CoV, and Other Coronaviruses
- eTable 2.** Risk of Bias Assessment for Studies Included in Review of Household Transmissibility of SARS-CoV-2
- eTable 3.** Description of Index Cases for Studies Included in Review of Household Transmissibility of SARS-CoV-2
- eTable 4.** Description of Contacts for Studies Included in Review of Household Transmissibility of SARS-CoV-2
- eTable 5.** Overdispersion of the Number of Secondary Infections of SARS-CoV-2 per Household
- eTable 6.** Assessment of Factors Potentially Affecting Susceptibility and Infectivity of SARS-CoV-2 in Household Transmission Studies
- eTable 7.** Household Secondary Attack Rate Comparison With Other Viruses
- eTable 8.** Weights for Combined Estimate of Secondary Attack Rates of Severe Acute Respiratory Syndrome Coronavirus 2 (SARS-CoV-2) for Household Contacts and Family Contacts
- eAppendix 1.** Eligibility Criteria
- eAppendix 2.** Data Extraction
- eAppendix 3.** Additional Description of Studies
- eAppendix 4.** Additional Description of Risk Factors
- eReferences.**